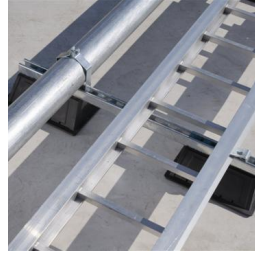


CADDY® PYRAMID Rooftop Systems



CADDY® PYRAMID rooftop supports are a surface mounted solution for supporting electrical and mechanical applications on a variety of roof surfaces. They offer superior load capacity and dramatically reduce installation time by replacing slow, heavy and labor-intensive methods for support of pipe, conduit, duct, cable tray and equipment. Unlike wood blocks, CADDY PYRAMID supports are specifically designed for rooftop applications, incorporating unique materials and finishes that protect roof membranes and provide superior corrosion protection.



CADDY® PYRAMID ST Strut-Based Supports

A strut-based support utilizing an engineered thermoplastic base with a UV stabilizer. Offers excellent load distribution with high load ratings.



CADDY® PYRAMID RL Roller-Based Supports

A polymeric roller-based support that helps ensure long-lasting performance and smooth roller actions. Provides superior durability for rooftop environments.



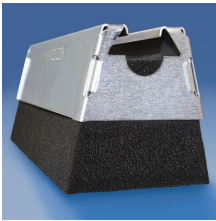
CADDY® PYRAMID H-Frame

A fast and economical solution that keeps installation costs low and allows flexibility in fabricating the H-frame on site.



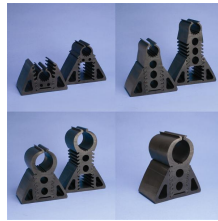
CADDY® PYRAMID Equipment Supports

A fast, flexible and innovative system for supporting heavy-duty mechanical services on rooftop surfaces.



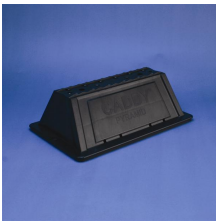
CADDY® PYRAMID 50 Foam-Based Support

The original CADDY® PYRAMID design provides lightweight support with roof-friendly materials.



CADDY® PYRAMID EZ Rubber-Based Support

EPDM rubber-based and height-adjustable. Requires no tools or fittings, making installations easier than ever.



CADDY® PYRAMID Universal Support

Provides a fixed-height mounting platform 4" (102mm) off the roof surface with 5.5", 10" or 16" (140mm, 254 mm, or 406 mm) lengths with captive stainless steel nuts to accommodate custom applications.



WARNING

ERICO products shall be installed and used only as indicated in ERICO's product instruction sheets and training materials. Instruction sheets are available at www.erico.com and from your ERICO customer service representative. Improper installation, misuse, misapplication or other failure to completely follow ERICO's instructions and warnings may cause product malfunction, property damage, serious bodily injury and death.

Copyright © 2014 ERICO International Corporation. All rights reserved.

CADDY, CADWELD, CRITEC, ERICO, ERIFLEX, ERITECH, and LENTON are registered trademarks of ERICO International Corporation.

